



CSG 2020 OCT. 26-DEC. 18
National Conference
REIMAGINED

INNOVATION CLASSROOM

Civic Health – The Role Redistricting Can Play in Building a Better Civic Landscape

Dec. 4 | 1-2 p.m. ET



Housekeeping

This presentation is being recorded. The recorded presentation will be posted to web.csg.org/2020 on the Monday following the session. If you have questions, contact registration@csg.org.

To reduce noise during the presentation, all participants will be muted. If you have questions or comments, please utilize the **"Raise Your Hand"** functions or place your question in the **Chat**. Speakers may take questions throughout or at the end.

Captioning is provided during this session. To activate, select the CC option in the Zoom menu below and turn on subtitles.

If you have technical difficulties or if you have a question about Zoom or any of these instructions, please use the **Chat** feature in your menu to type a question. CSG staff will get back to you as soon as possible.

CSG 2020 OCT. 26-DEC. 18
National Conference
REIMAGINED



CSG 2020 OCT. 26-DEC. 18
National Conference
REIMAGINED

THANK YOU TO THE 2020 NATIONAL CONFERENCE SPONSORS!





CSG 2020 OCT. 26-DEC. 18
National Conference
REIMAGINED

THANK YOU TO THE 2020 NATIONAL CONFERENCE SPONSORS!





CSG 2020 OCT. 26-DEC. 18
National Conference
REIMAGINED



Richard Leadbeater

Global Manager, State and
Provincial Governments

Esri

Introductions

*This session covers the need for
openness,
citizen engagement, and
transparency
in the redistricting process.*

Forty-two states have incorporated some level of public participation in their redistricting process; most have missed the point. The real driver in this movement is a rather simple desire to be involved. This session will focus on two case studies where civic leaders extend the redistricting data and software tools to the public and discuss the civic health benefits they received.

Richard Leadbeater, Esri

Global Manager; State Government Industry Solutions

Email: rleadbeater@esri.com

Office: 909-369-4448

Twitter: @PolicyMapper



Esri Presentation to:
CSG 2020 National Conference
November 2020

EXECUTIVE BRIEFINGS

Esri Redistricting

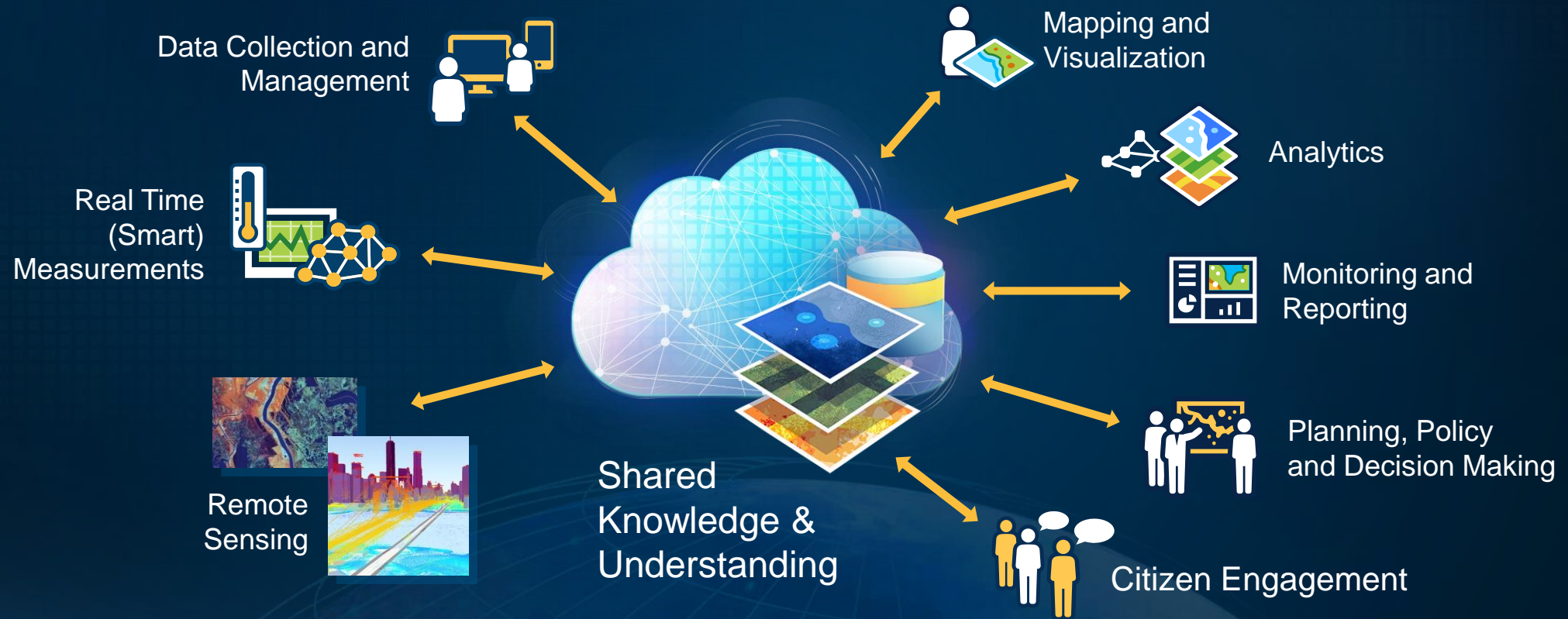


Civic Health:
The role redistricting can play in building a better civic landscape

Bring clarity to the redistricting process

What is GIS?

A System for Managing, Sharing, and Applying Geographic Information



Supporting Collaboration and Communication

GIS Maps and Dashboards Are Becoming Pervasive

Opening the World's Eyes to the Power of Real-Time and Data-Driven Visualization

Dynamic & Interactive

Analytic

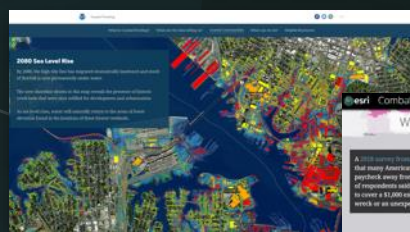
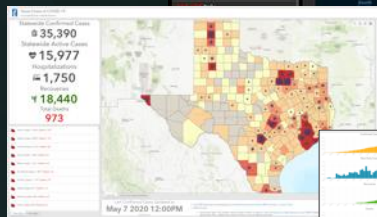
Geospatial Infrastructure



Maps



Dashboards



StoryMaps



Public

Decision Makers

Policy Makers

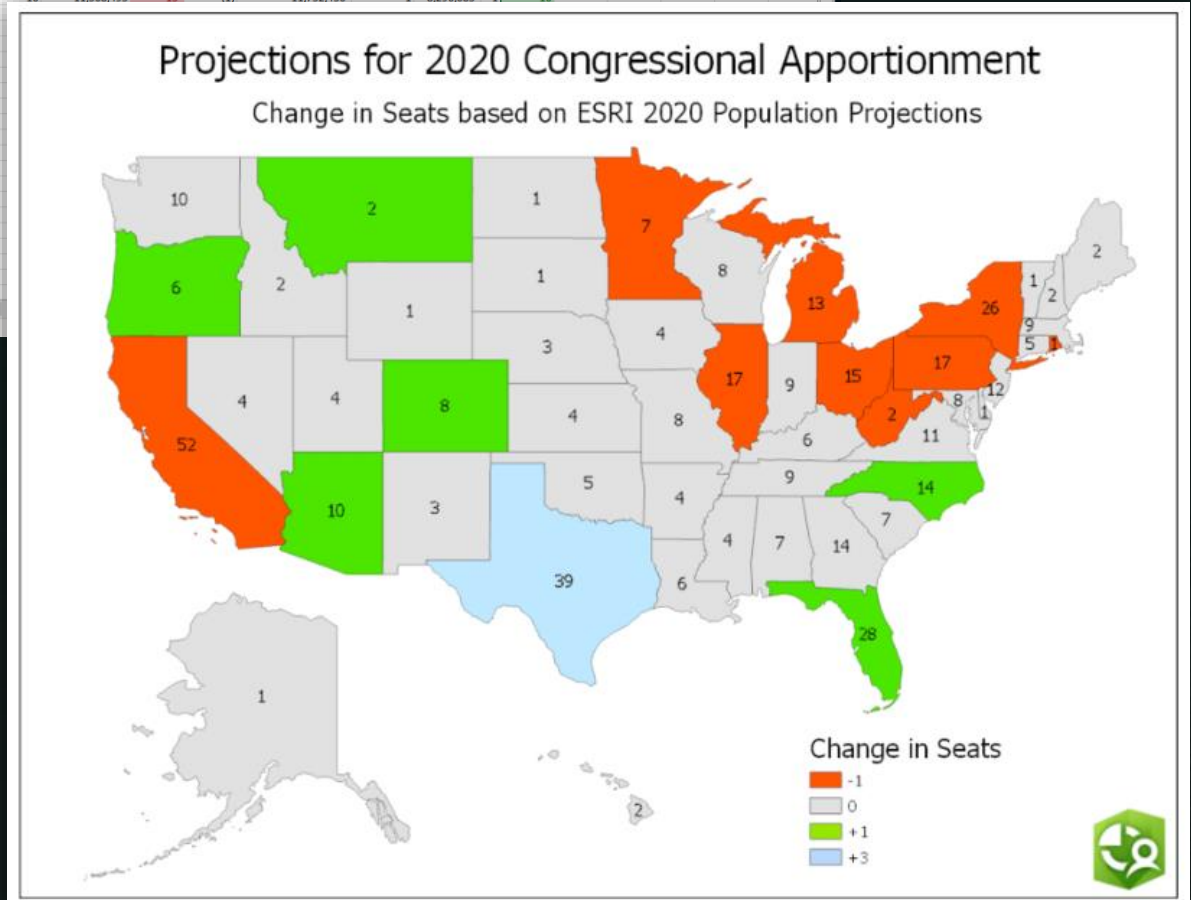
Telling the Stories That Help People Understand . . .
. . . Increasingly Impacting Policies and Action

Apportionment

Seat	State	District	Gain or Loss by
430	New York	26	233,154
431	Alabama	7	47,980
432	Montana	2	9,204
433	Texas	39	222,257
434	Arizona	10	41,971
435	California	52	73,538
436	Minnesota	8	10,687
437	West Virginia	3	6,695

Copy of apportionment exercise sept 2017 (R) - Excel

State	State Name	2010 Census	2020 (pro)	+/-	2020 Estimate (Esri)	Change
CA	California	37,341,989	39,802,811	2,460,822	50	+3
TX	Texas	25,268,418	29,078,165	3,809,747	51	+3
FL	Florida	19,421,055	20,654,191	1,233,136	28	+1
NY	New York	18,900,773	20,119,871	1,219,098	26	+1
IL	Illinois	12,864,380	13,054,000	189,620	17	+1
PA	Pennsylvania	12,734,905	12,992,578	257,673	17	+1
OH	Ohio	11,568,495	11,732,436	163,941	16	+1



Esri Demographics

Reapportionment Projections and the Potential Impact of New States

State and Provincial Government
July 26, 2019

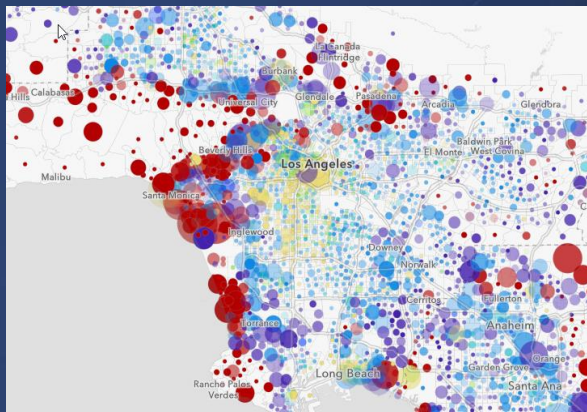


On April 1st, 2020 the decennial census will attempt to "count everyone once, only once, and in the right place." Much is at stake in terms of divvying up federal dollars and political clout. States that are on the cusp of gaining or losing one of the 435 House of Representative seats are paying particular attention to the count, with many forming Complete Count Committees to ensure they have the most accurate count possible. In anticipation of Census 2020, Esri's 2019 Time Series population estimates are used to forecast the winners and losers in the next round of reapportionment. We extend the analysis to explore some potential reapportionment scenarios based on changes in statehood for Puerto Rico and the District of Columbia (DC).

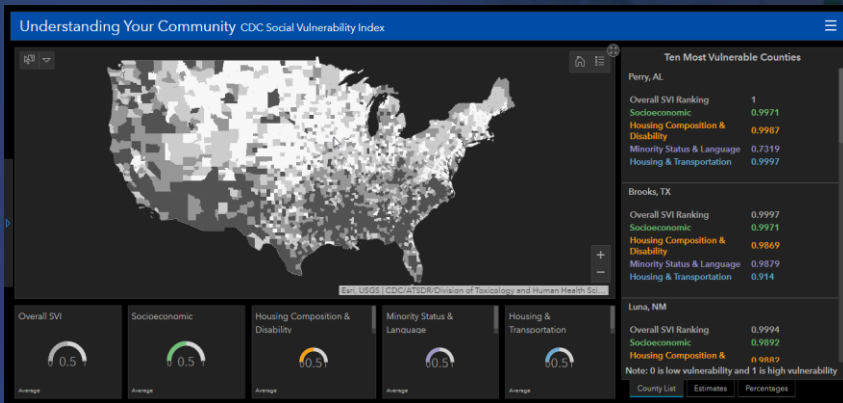
Esri Policy Maps

esri.com/policymaps

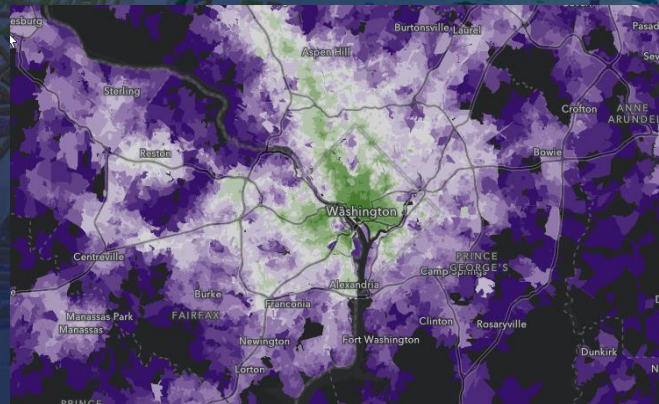
Household Income



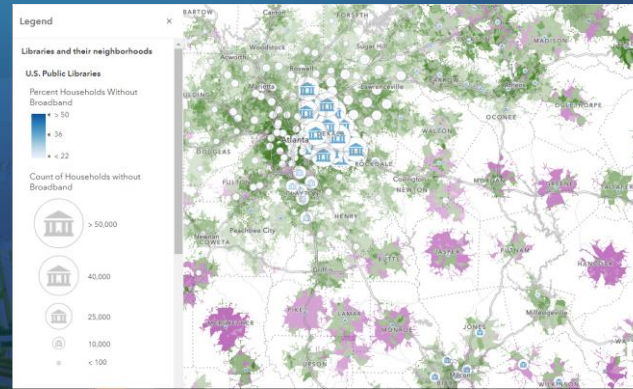
Social Vulnerability Index



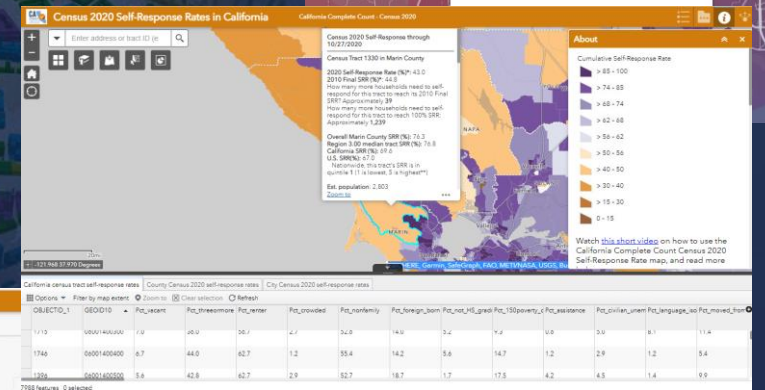
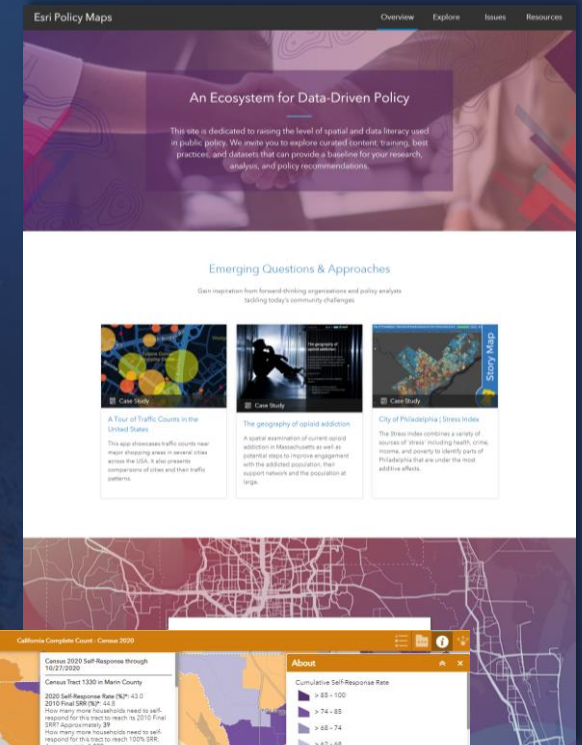
Job Accessibility by Walking and Transit



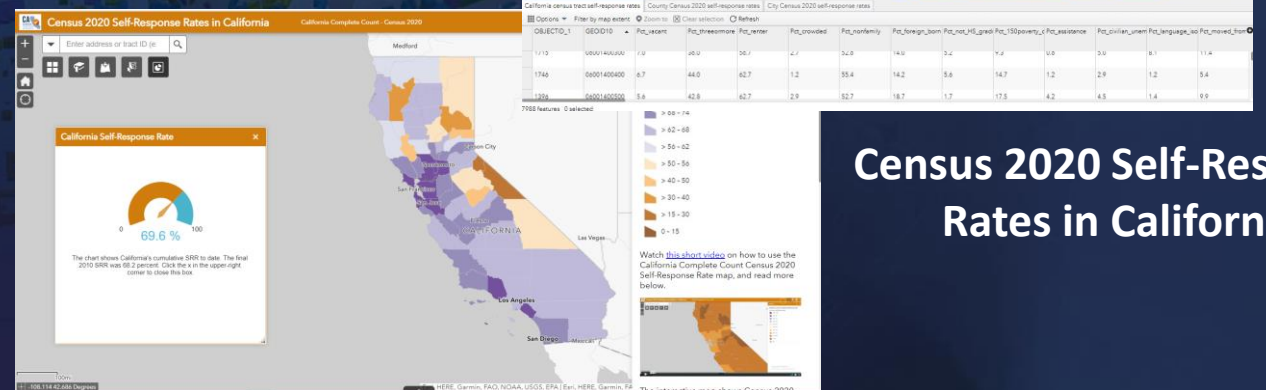
Walking Distance to a Library & Broadband Rating



Opioid Mapping

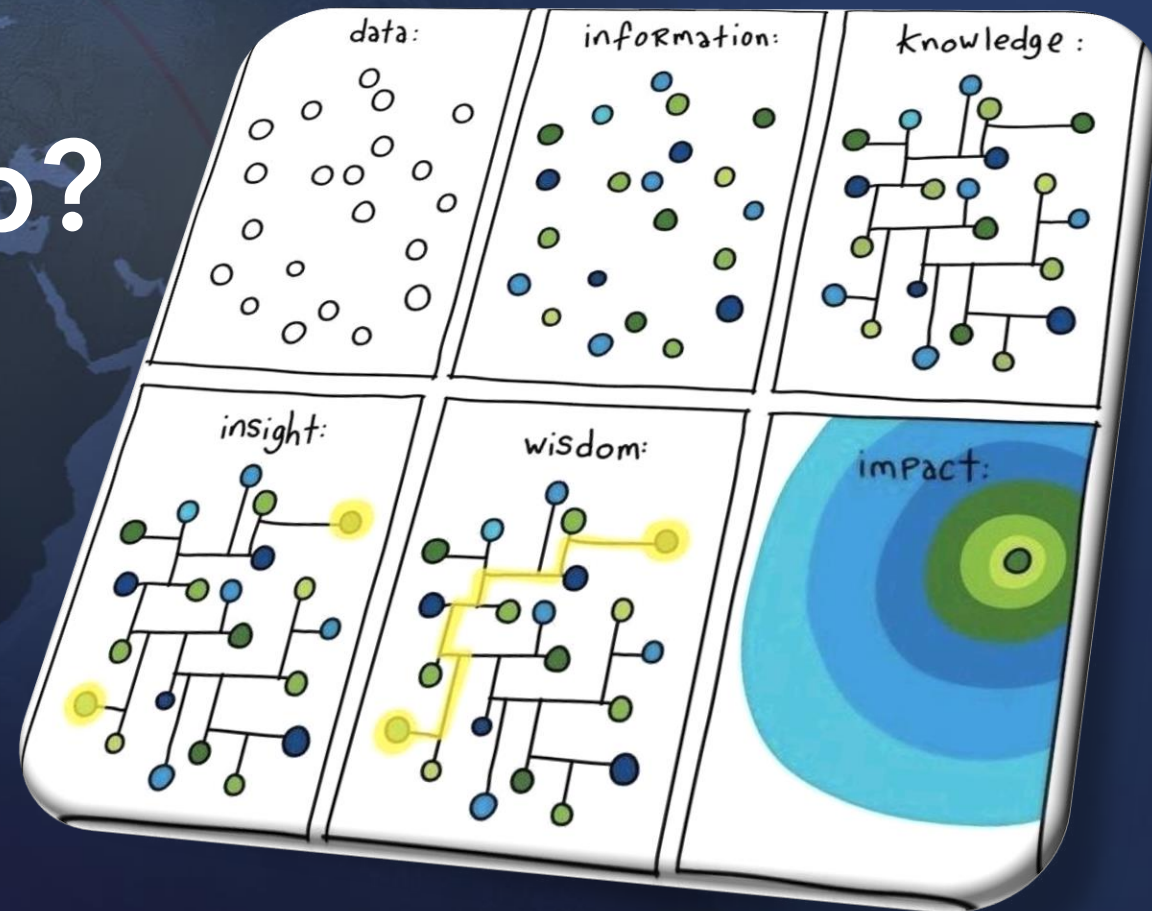


Census 2020 Self-Response Rates in California



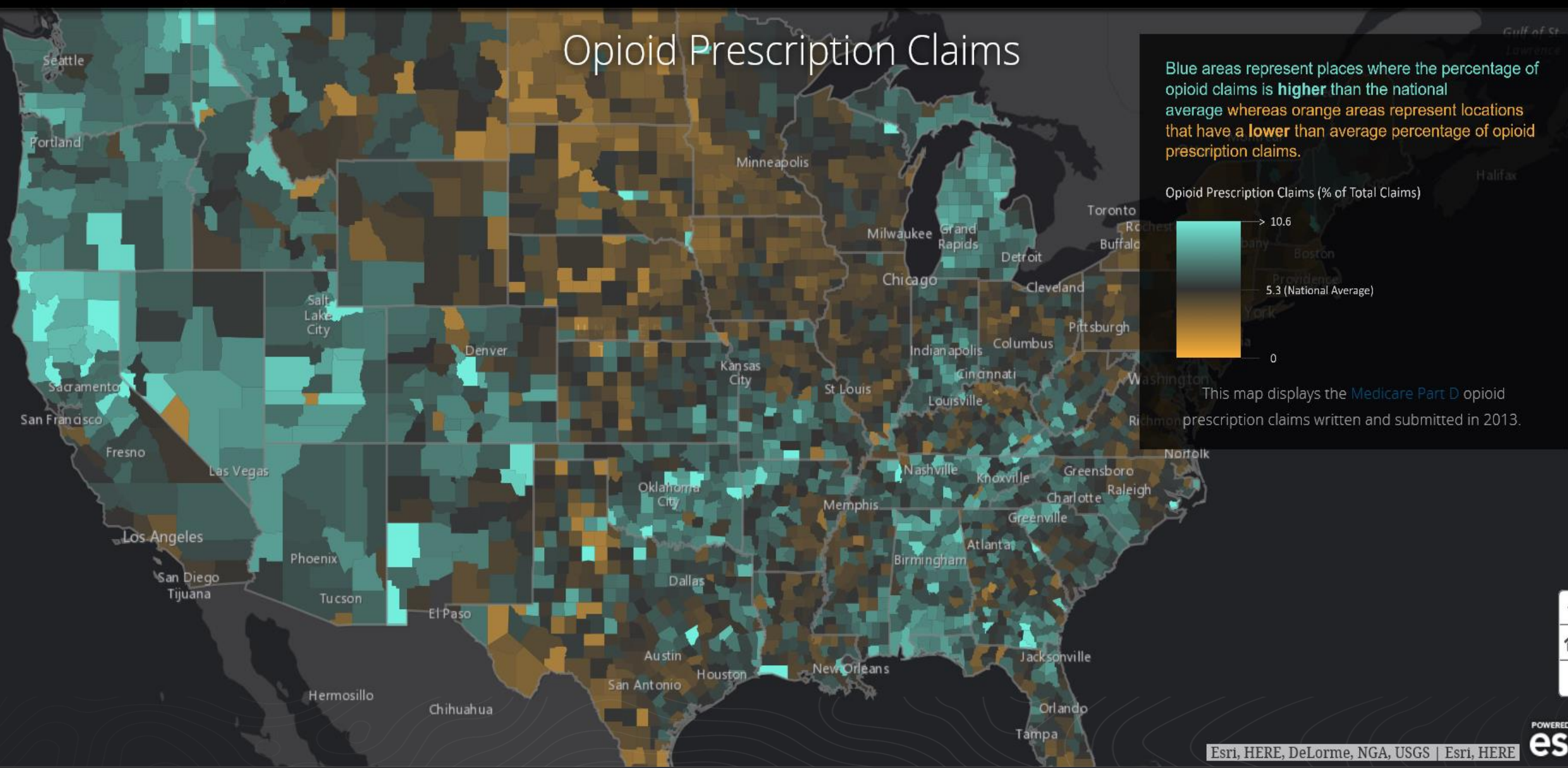
What is a Policy Map?

A Map that shows you *where* to intercede.



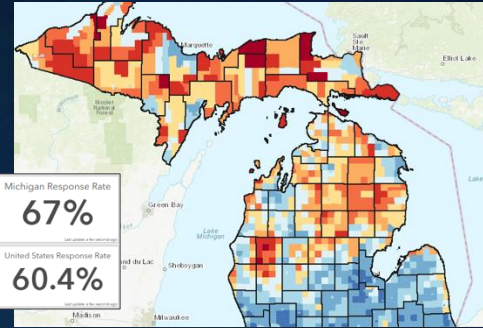


Opioid Prescription Claims



Census, Demographics and Statistics

Census Response Rates



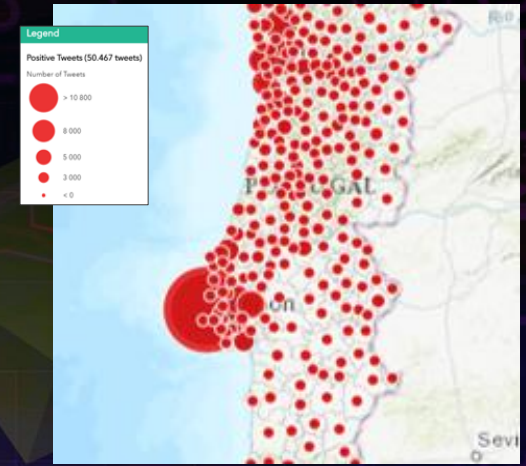
University of Michigan
Michigan

Population & Employment

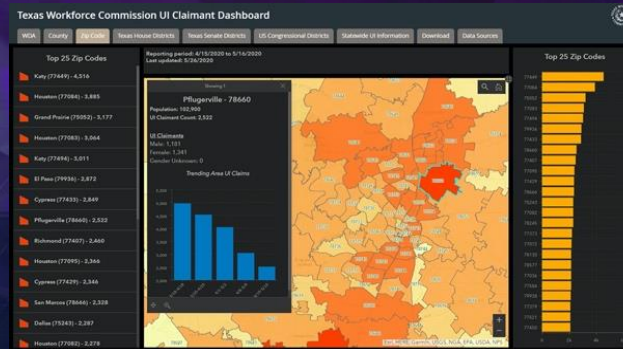


MAPA
Nebraska | Iowa

Sediment Analysis

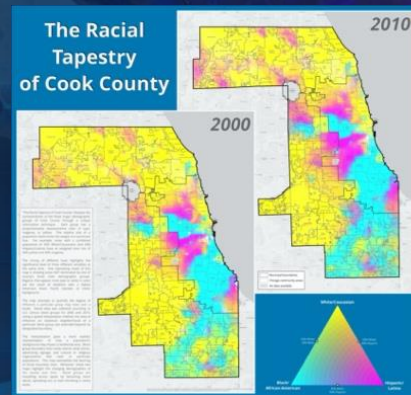


Unemployment Claims



Texas Workforce Commission
Texas

Racial Tapestry

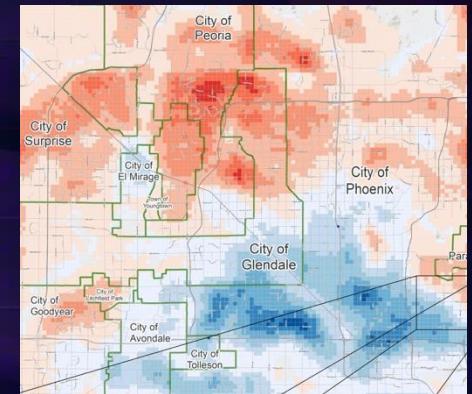


Cook County
Government
Illinois

Disadvantaged Neighborhood Survey



Registered Voters



Maricopa County Recorder's Office
Arizona

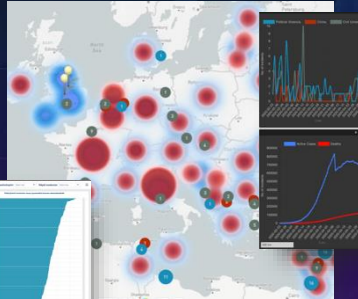
COVID-19 Dashboards

Executive Decision Support

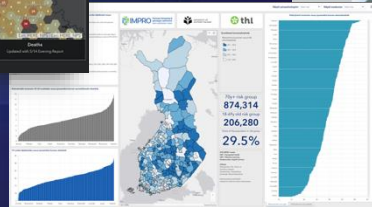


City of Baton Rouge and Parish of East Baton Rouge Louisiana

Pandemic and Civil Unrest



Vulnerable Populations



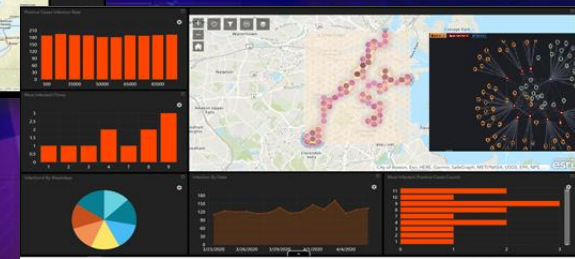
University of Eastern Finland Finland

Cases, Deaths and Recovered

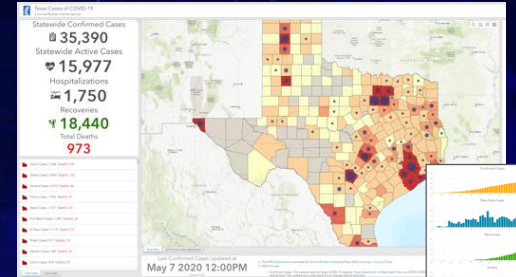


Mike Vatter Michigan

Contact Tracing



Cases and Deaths

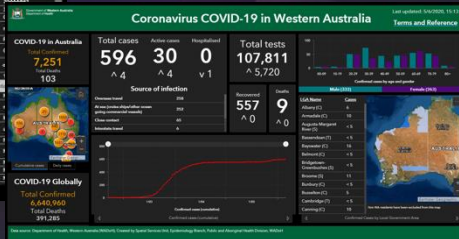


Texas A&M University Texas

Hospital Admissions and Patient Status

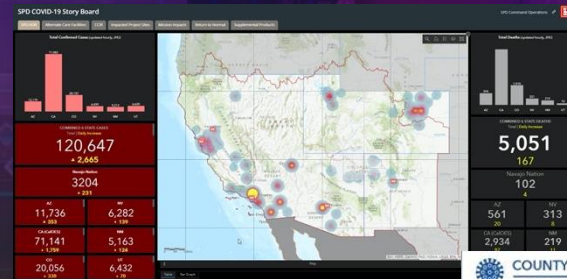


Statewide Awareness



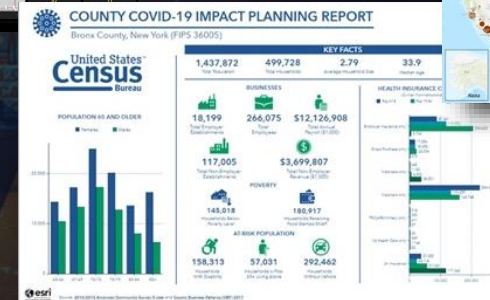
Department of Health, Western Australia Australia

Potential Impacts on Operations



USACE Southwestern US

Census Planning



US Census New York

Firefighters Impacted



IAFF

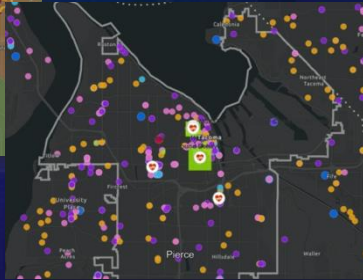
COVID-19 Response

Case Demand & Hospital Resources



City of Tacoma Washington

ICU Beds and Available Staff



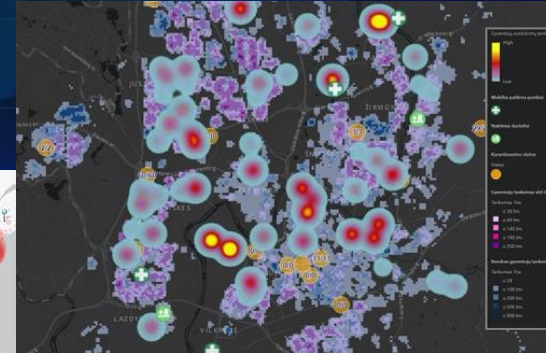
City of Tacoma Washington

Red Cross Response Resources

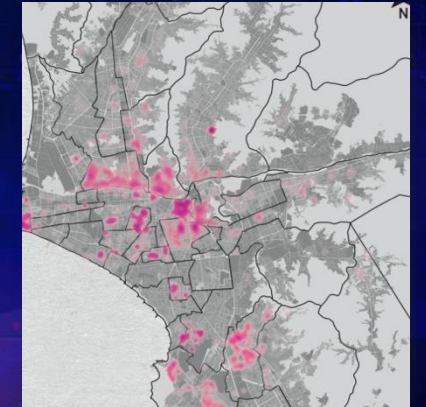


American Red Cross US

Coordinated Response Map



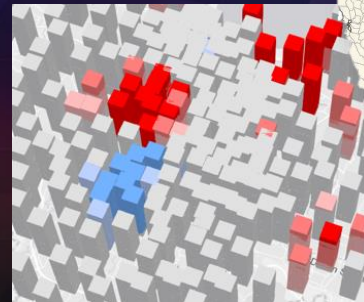
Vulnerable Urban Population



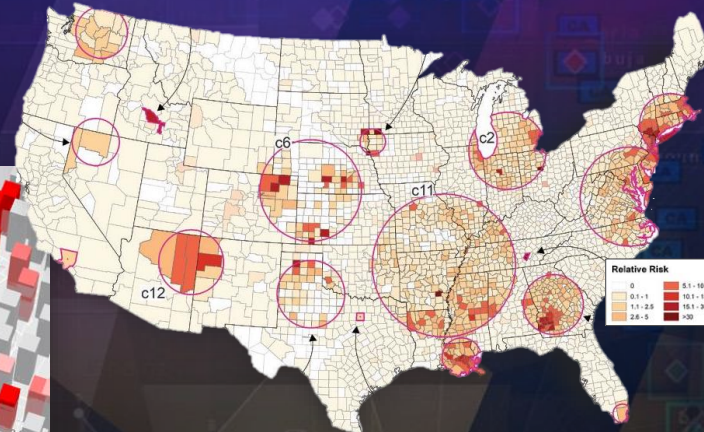
Social Distancing Sidewalk Analysis



Space-Time Cube Hot Spot Analysis

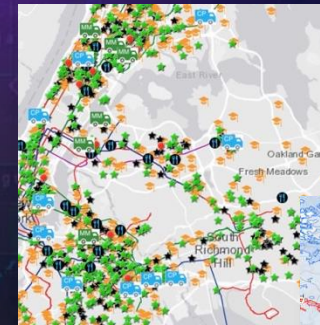


Statistical Analysis of Space-Time Clusters



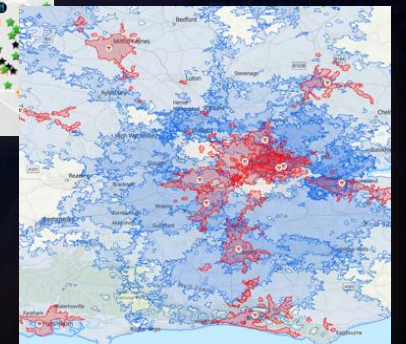
Johns Hopkins Bloomberg School of Public Health US

Emergency Food Distribution



City Harvest New York

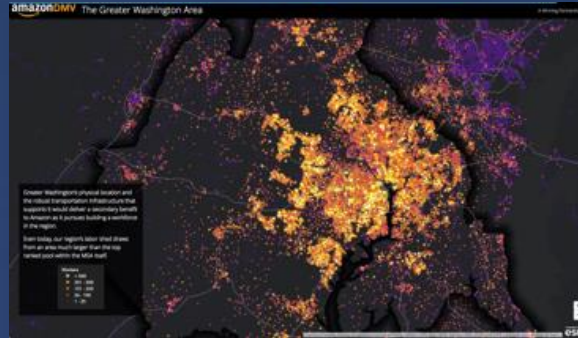
Testing Sites and Travel Time



USARAF
 Emergency Medical Services
 Ethiopia
 medical professionals
 and experience

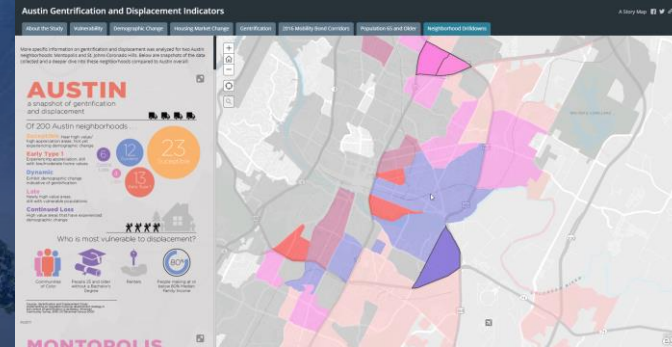
Data-Driven Decisions and Policymaking

Workforce Development



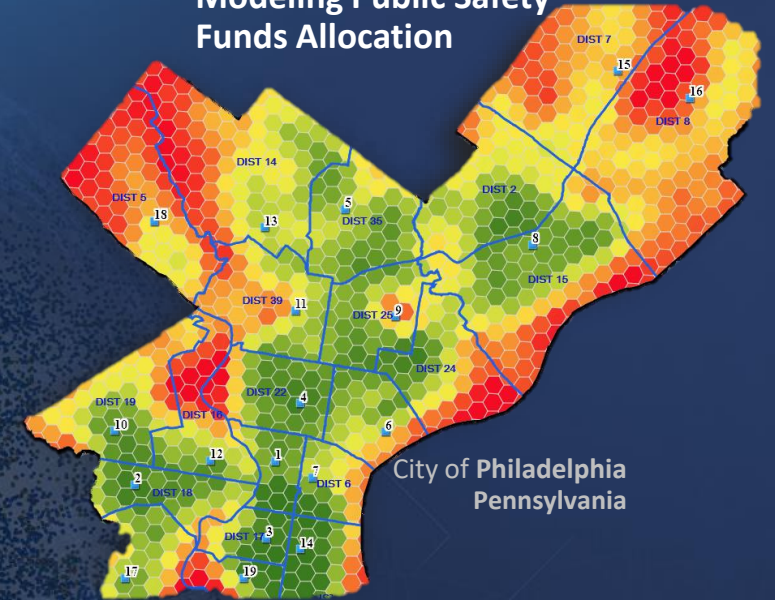
Washington, DC

Gentrification and Displacement Indicators



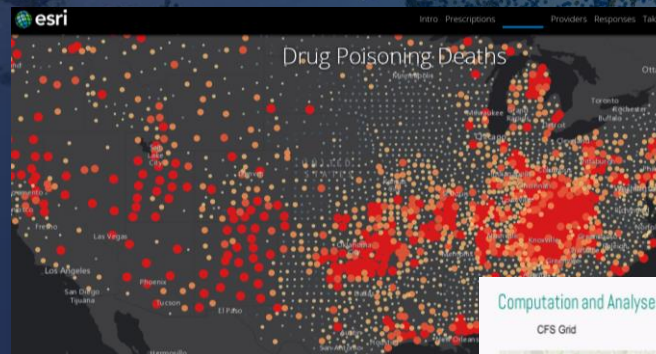
City of Austin Texas

Modeling Public Safety Funds Allocation



City of Philadelphia Pennsylvania

NLC and NACo Opioid Taskforce



Opiate Deaths

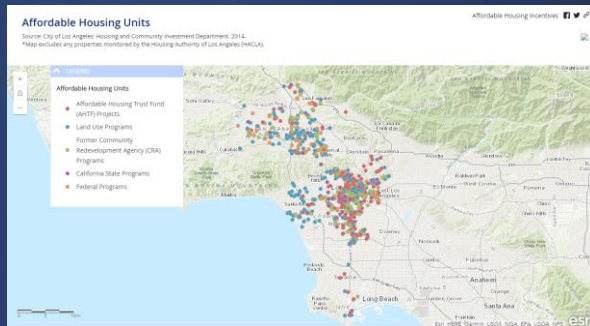
Traffic Safety



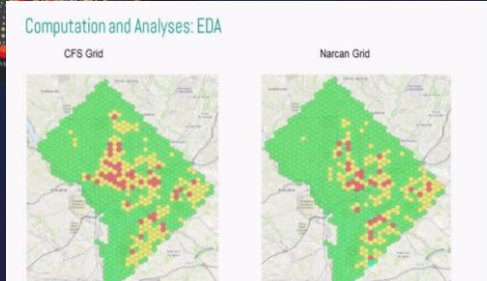
Kansas City Kansas

City of Oak Hill West Virginia

Affordable Housing Units



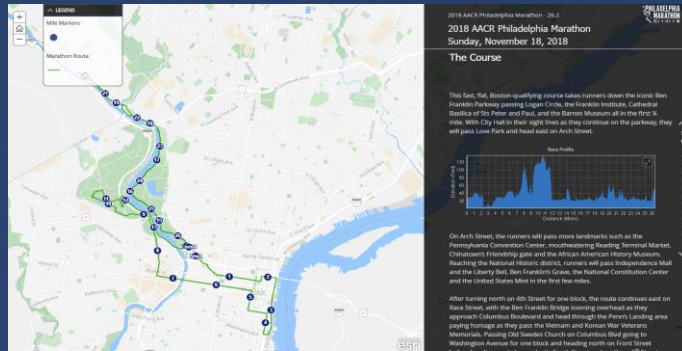
City of Los Angeles California



Washington, DC

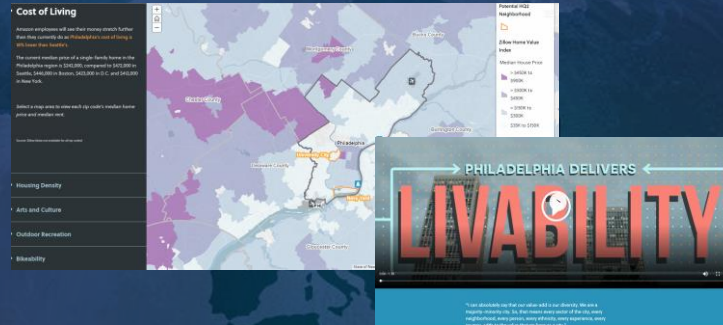
Citizen Engagement, Open Data, and Collaboration

City Event Promotion



City of Philadelphia
Pennsylvania

Amazon HQ2 Response



City of Philadelphia
Pennsylvania

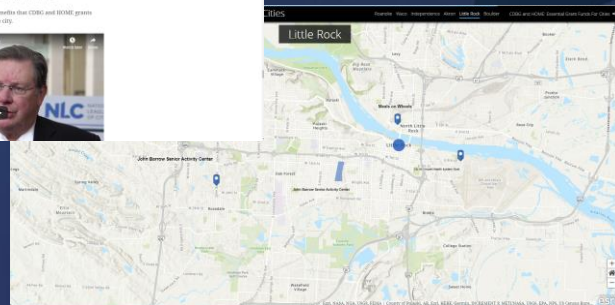
Smart Device Integration



City of Johns Creek
Georgia

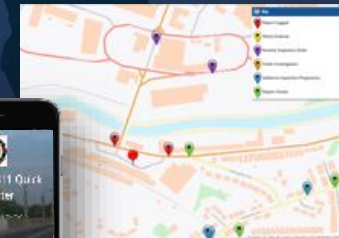


NLC Advocacy Story Maps Why CDBG & HOME Grants Matter



City of Little Rock
Arkansas

Citizen Problem Reporting

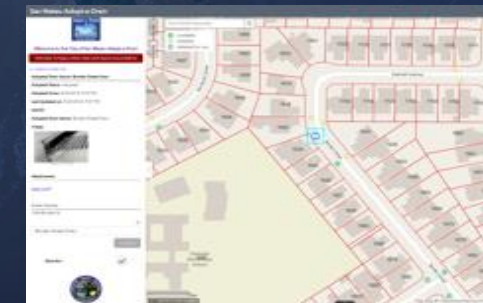


311 Reporter



Pennsylvania

Adopt-A-Storm Drain



California

Zoning Comment



Texas

Technology in Redistricting

Some background

Some History:

1980's

Highly Constrained

1990's

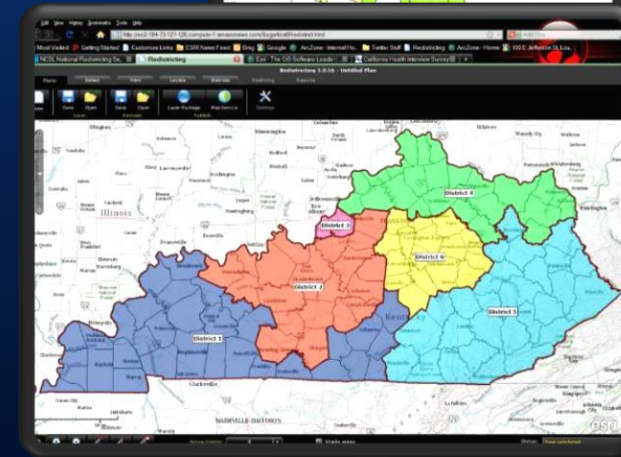
Tools available but cumbersome

2000's

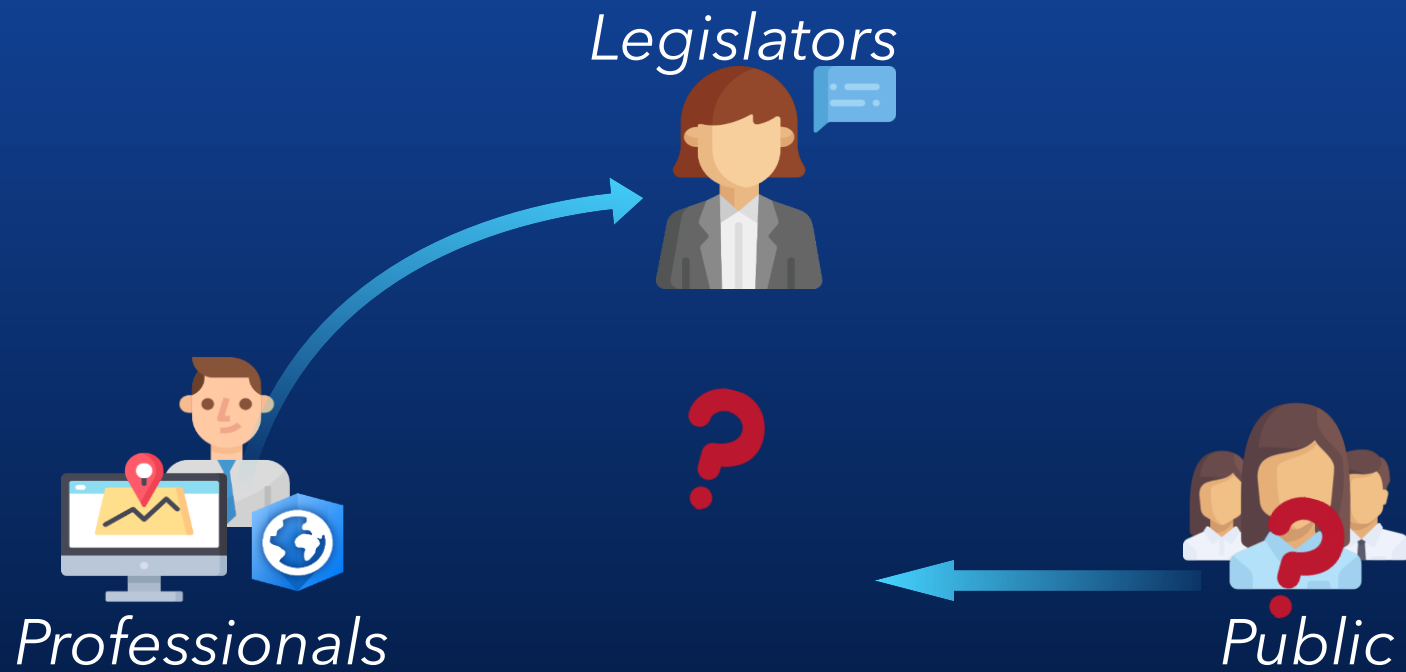
Usability and some public involvement

2010's

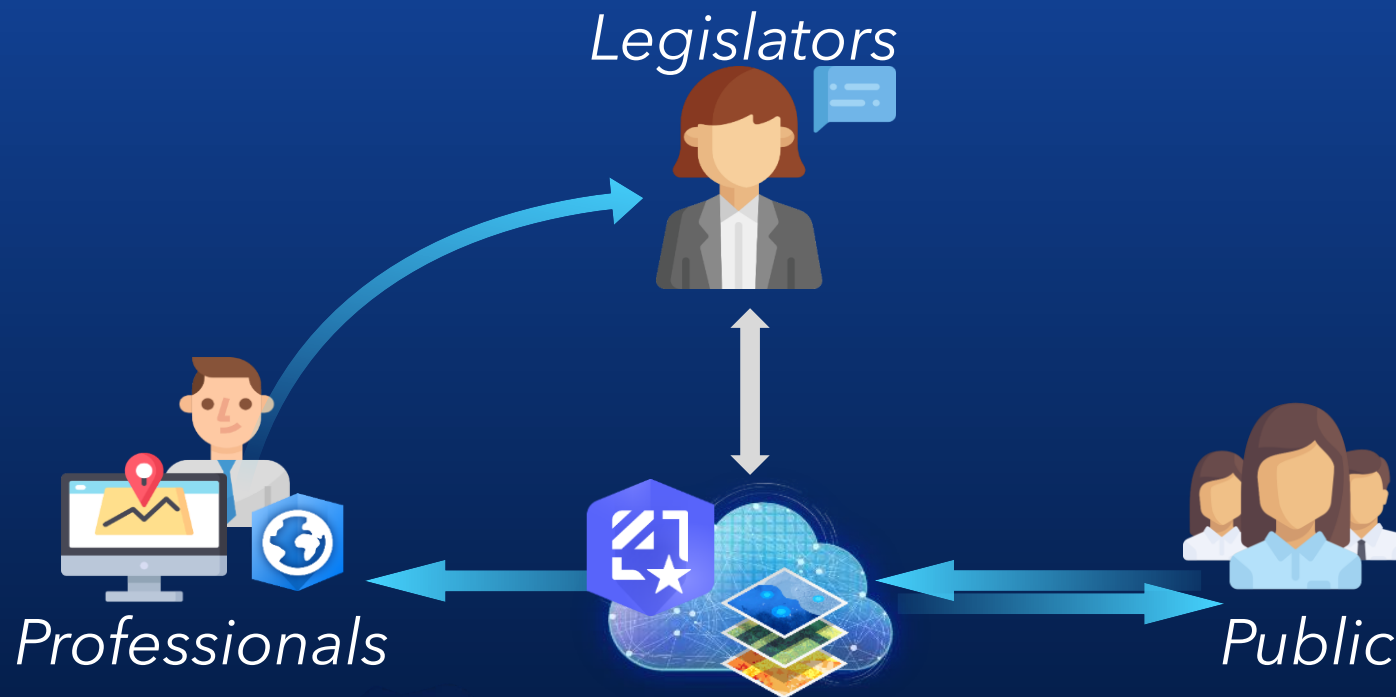
Almost consumer-level



The 2005 Redistricting Story



A vision for 2010



Increasing collaboration between government and citizens

- Provided via web browser
- Facilitates collaboration, sharing, and community building
- Easy to use interface reduces costs associated with training
- Minimal GIS experience required
- Centralized IT
- Cost effective way to provide access to citizens

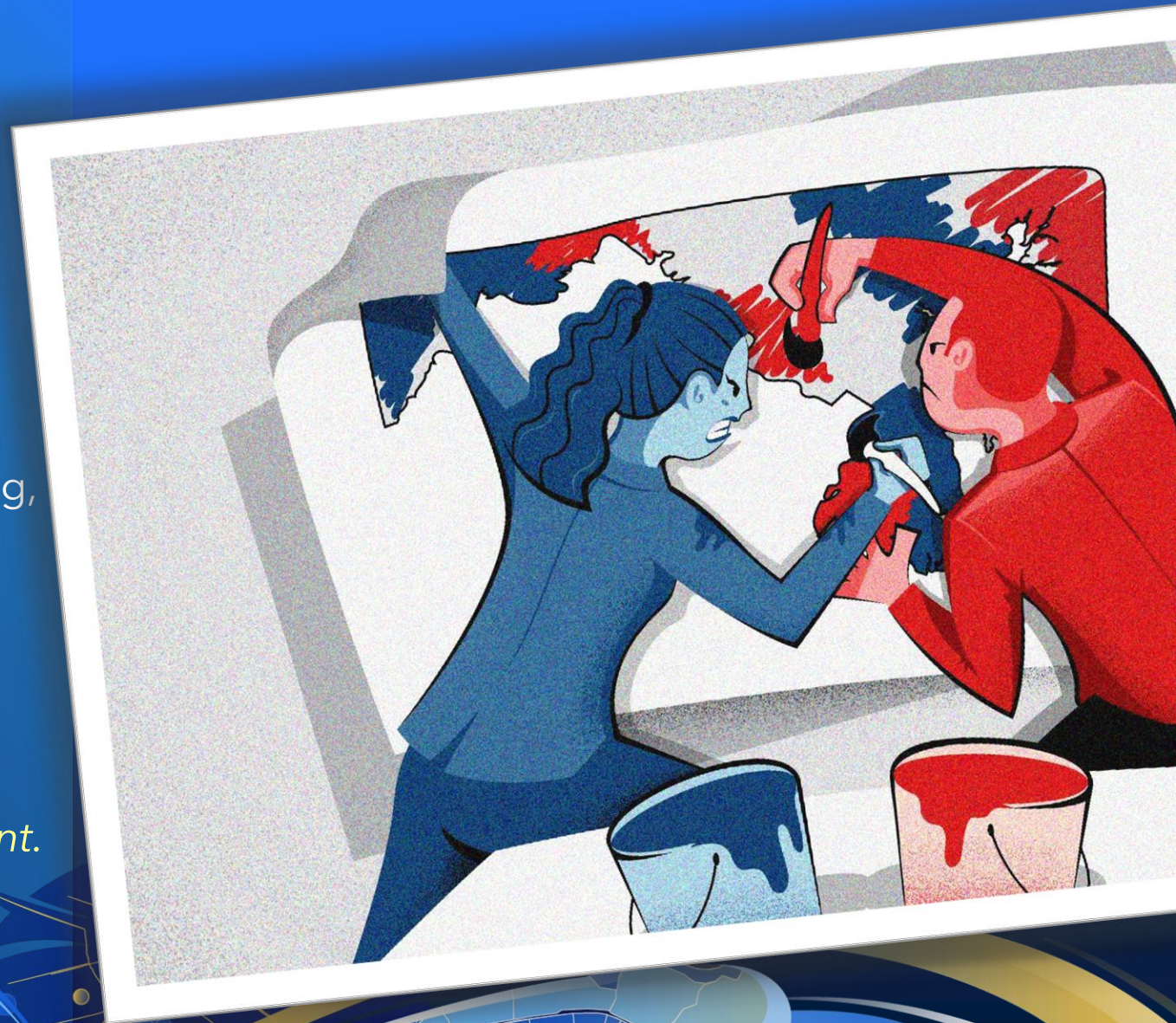


Esri Redistricting is a web-based solution that *enables governments, advocates, and citizens* to complete and securely share compliant redistricting plans.

Esri Redistricting provides comprehensive tools for plan creation, management, visualization, editing, and collaboration.

Built-in tools check for common compliance blunders.

Online functionality allows *Openness, Transparency, and Citizen Engagement.*



Features Overview



Esri Redistricting



Data
Sources



Plan
Management



Collaboration

State of Utah take-aways...

- **Why Utah chose Esri Redistricting**
 - Public engagement
 - Online interaction
 - Customizable
 - Cumbersome process
- **Utah implemented 3-pronged approach**
 - Esri Redistricting
 - Autobound extension for ArcGIS Desktop
 - Companion website
- **Utah guaranteed full transparency by:**
 - Media participation
 - Multiple public meetings
 - Software interaction during meetings
- **Utah's redistricting totals:**
 - Citizens registered > **1000**
 - Submitted plans = **323**
 - Met criteria = **271**



The screenshot shows the Esri website's 'Publications' page. The main navigation bar includes 'Products', 'Industries', 'About', and 'Support'. The secondary navigation bar includes 'Newsroom', 'Overview', 'WhereNext Magazine', 'Podcasts', 'Publications', 'Blog', 'News', and 'Media Relations'. The main content area features a large image of a natural rock arch in a desert landscape. Below the image is a blue 'ARCNEWS' tag and the article title 'Utah Involves Public in Redistricting'. The article is dated 'Redistricting | Summer 2018'. The article text discusses the transparency of the redistricting process in Utah, mentioning the Esri Redistricting Solution and the involvement of the Redistricting Committee.

esri Products Industries About Support

Newsroom Overview WhereNext Magazine Podcasts Publications Blog News Media Relations

ARCNEWS

Utah Involves Public in Redistricting

Redistricting | Summer 2018

With the Esri Redistricting Solution, the State Increased Transparency of Revising Legislative Boundaries

Redrawing representative districts in the United States is a contentious process fraught with acrimony. Because of the political influence at stake, the exercise regularly leads to allegations of unfairness. Nevertheless, after each US Census is taken, states must examine—and potentially redraw—their congressional districts.

For the last round of redistricting in 2011, the State of Utah took a novel step toward mitigating criticism: its Redistricting Committee made the process much more transparent to better educate citizens about how it works. Using the Esri Redistricting solution, the committee opened up the proceedings to the public, revealing all the intricacies involved in redistricting and displaying the many genuine obstacles to formulating a solution that

REDISTRICTUTAH.COM

Redistrict Utah

Online Home of Utah's 2011 Redistricting Effort

Basics

Bills: Passed Maps

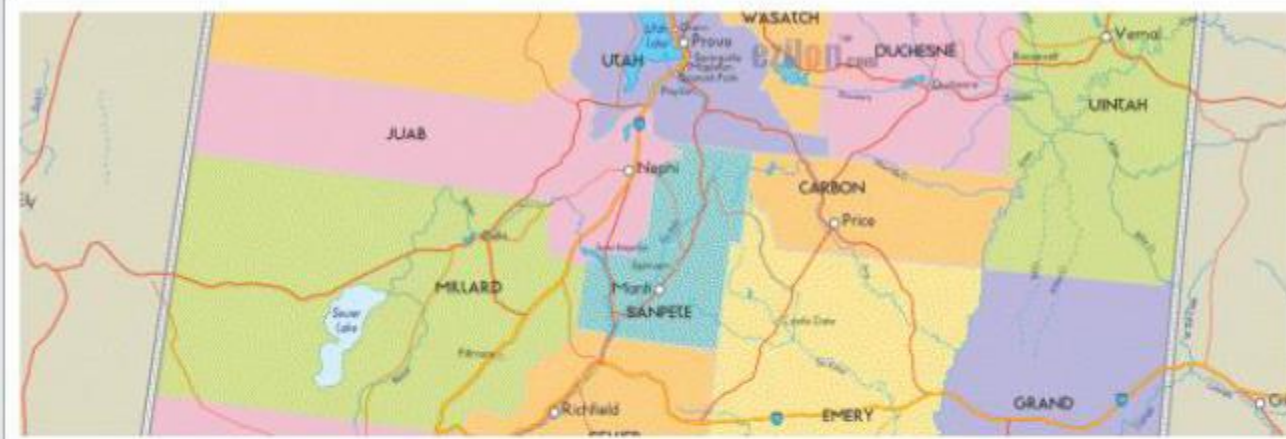
Bills: Special Session Maps

Maps ▾

Meetings

Perspective

Your Map



Legislative Enrolled Maps

After months of hard work, the redistricting process came to a close during the legislative special session, held in October. The Legislature approved the final maps, and Governor Herbert signed them into law. Each of the maps can be found below:

Featured Articles



Legislative Enrolled Maps



Redistricting 101
When, what and why.



Draw Your Map
Online redistricting program

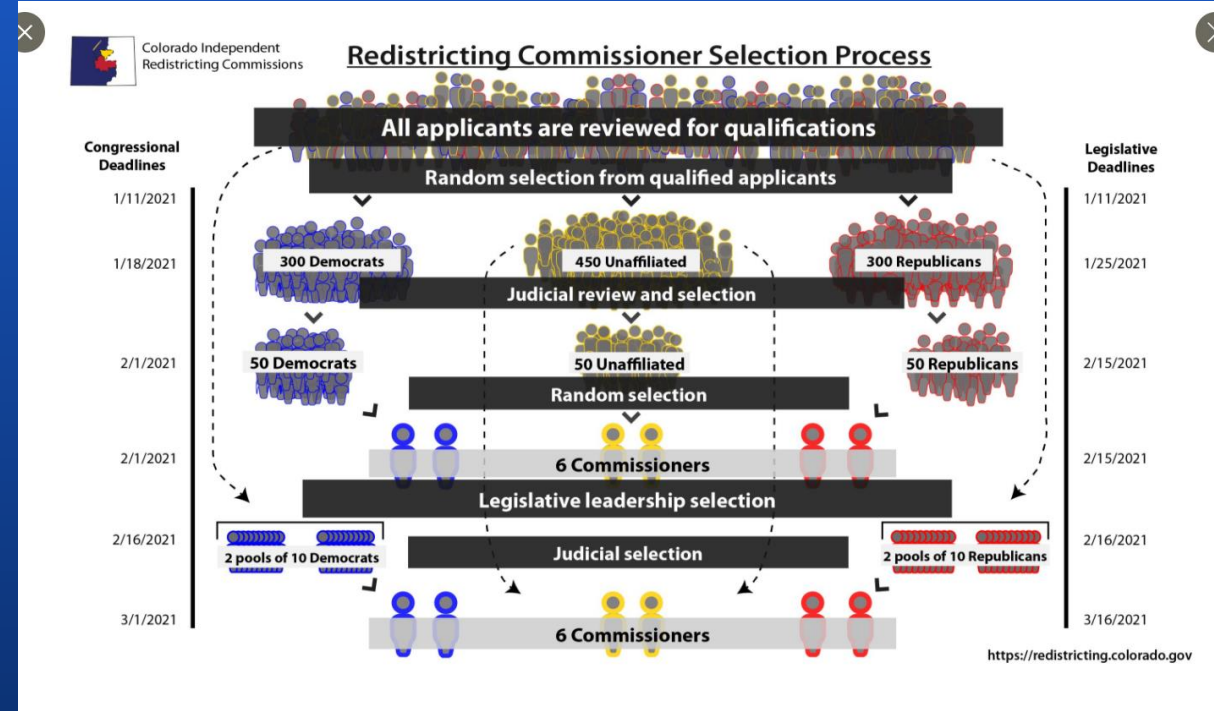


State of Colorado take-aways...

Map Consideration and Public Involvement

Preliminary Map


- Nonpartisan commission staff creates a preliminary redistricting map, but can consider public comments while developing the map.
- Members of the public may also present proposed redistricting maps and written comments for the commission's consideration.
- The commission must hold at least 3 public hearings in each current congressional district before approving a redistricting map, for a minimum of 21 public hearings throughout the state.
- At least 10 commissioners must attend each hearing, either in person or electronically.
- Commission hearings must be broadcast online.
- The commission website will allow a way for Colorado residents to submit maps or written comments.
- All written comments pertaining to redistricting will be published on the website.



State of Montana take-aways...

This story map will take you through the redistricting process in Montana from start to finish. You'll learn about:

- What redistricting is and why it happens
- Who is in charge of redistricting and how they got there
- The legal standards used to develop districts
- The challenges of redistricting in a large, rural state
- How to get involved

A story map  **LEGISLATIVE SERVICES DIVISION**

Guide to State Legislative Redistricting in Montana

Montana's Numbers

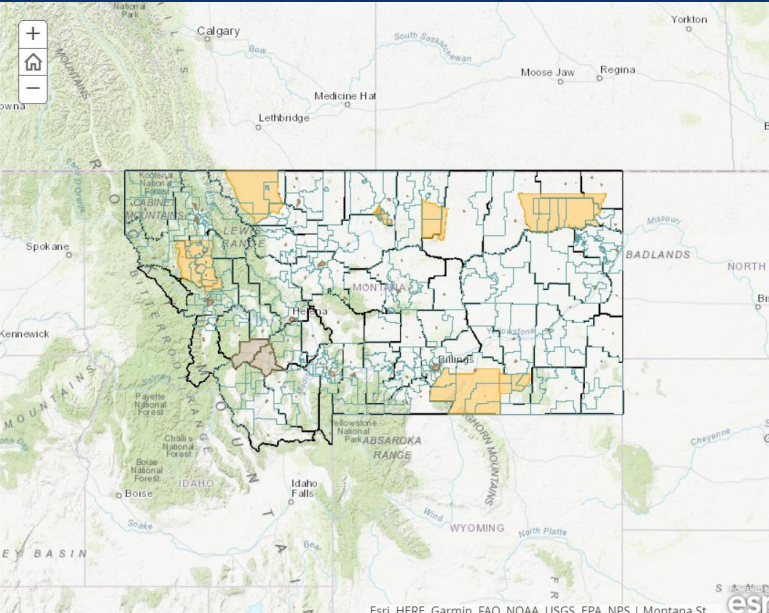
A similar process happens in Montana for the state legislative districts. Montana is divided into 100 state districts and 50 senate districts. One legislator is elected from each of those districts for a total of 150 legislators in the Montana Legislature.


After the 2010 Census, Montana's population was 989,415. That means each state house district needs approximately 9,894 people and each state senate district needs approximately 19,788 people.

Pretty simple, right? Just divide up those people into 100 districts and we are done here.

The First Complication


Except that Montanans aren't equally distributed across the state in square-mile boxes. The vast majority of people are



Esri, HERE, Garmin, FAO, NOAA, USGS, EPA, NPS | Montana St... 

[Guide to State Legislative Redistricting in Montana \(arcgis.com\)](#)

Census 2020: Montana Redistricting Program

Montana Department of Commerce 

[Redistricting](#) [Block Boundary Suggestion](#) [Voting District Project](#)

the 2020 Census P.L. 94-171 Redistricting Data prior to April 1st, 2021, one year from census day.

Five phases of the Redistricting Data Program:


Phase 1: Block Boundary Suggestion Project (BBSJP)
Initial Identification of Updates - December 2015 - May 2016
Verification of Updates - December 2016 - May 2017

Phase 2: Voting District Project (VTD) December 2017 through May 2019
Initial Identification of Updates - December 2017 - May 2018
Verification of Updates - December 2018 - May 2019
Verification of Updates II - December 2019 - March 2020


Phase 3: Delivery of the 2020 P.L. 94-171 Redistricting Data Files and Geography Products - April 1, 2021

Phase 4: Collection of Post-2020 Redistricting Plans

Phase 5: Review of 2020 Census Redistricting Data Program and Recommendations for Census 2030



Census 2020: Montana Redistricting Program

Montana Department of Commerce 

[Redistricting](#) [Block Boundary Suggestion](#) [Voting District Project](#)

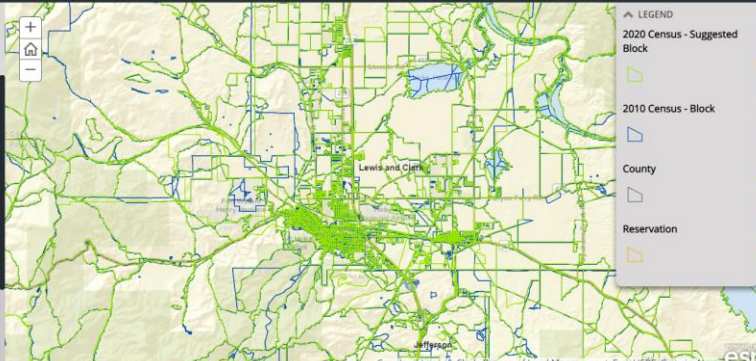
Block Boundary Suggestions for the State of Montana

The Census & Economic Information Center (CEIC) within the Montana Department of Commerce was designated as the non-partisan liaison to the U.S. Census Bureau Redistricting Data Program by the governor and legislative leadership of the State of Montana.

In this capacity, the CEIC worked with counties in the state to identify and suggest changes to census block boundaries for the 2020 Census.


The map on the right displays the final Block Boundary Suggestions submitted by CEIC on behalf of the State of Montana to the U.S. Census Bureau. The U.S. Census Bureau will review and align the suggested block boundaries for use in calculating statistics for the 2020 Census.

Zoom into a particular area to see the Block Boundaries.



LEGEND
2020 Census - Suggested Block
2010 Census - Block
County
Reservation

Census 2020: Montana Redistricting Program

Montana Department of Commerce 

[Redistricting](#) [Block Boundary Suggestion](#) [Voting District Project](#)

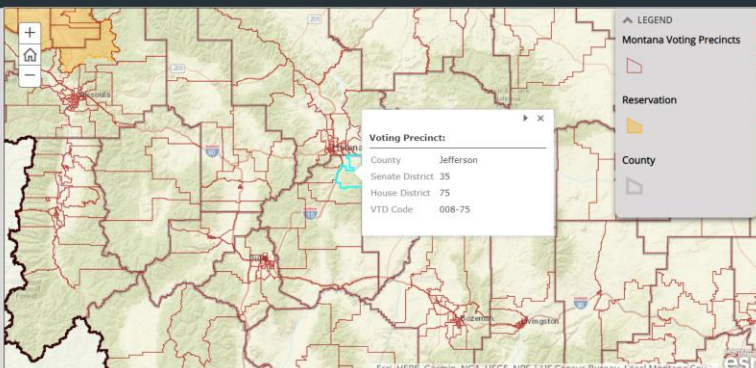
Voting District Project

The Census & Economic Information Center (CEIC) and the Montana State Library (MSL) have teamed up to develop a Montana Voting District map layer. This layer has been submitted to the U.S. Census Bureau for use in the upcoming 2020 Census.

Voting Districts are referred to as voting precincts in the State of Montana. This project was a significant undertaking required close collaboration with counties throughout the state. The Montana State Library will maintain this layer for public use going forward.

Burgundy lines represent the boundary of the voting districts established for the 2020 Census.

Zoom and pan around the map to explore the entire state.



LEGEND
Montana Voting Precincts
Reservation
County

Voting Precinct:
County Jefferson
Senate District 35
House District 75
VTD Code 008-75

Key Takeaways



Esri Redistricting

Open and Transparent should provide;

- ❑ *a web-based environment for creating and sharing plans,*
- ❑ *the ability to collaborate on plans and engage your communities,*
- ❑ *clarity into the redistricting process*



Redistricting

What You Need to Know About Redistricting

Government

October 12, 2020



Richard Leadbeater

Geography is Destiny

I recently listened to a series of podcasts about the upcoming redistricting process. The host of the podcasts reviewed a collection of stories examining the many legal battles concerning redistricting over the past several years. Eventually, the host used a phrase that grabbed my attention. While describing the winners and losers in redistricting, he said, "Geography is destiny." Isn't that fitting? Credited to Napoleon and his geopolitics theories,

Openness, Transparency, and Citizen Engagement



CSG 2020 OCT. 26-DEC. 18
National Conference
REIMAGINED

Upcoming Innovation Classrooms

Advanced Recycling as a Pathway to Plastics Circularity

Presented by The American Chemistry Council | Dec. 14 | 1 p.m. ET

Anti-obesity Medication as a COVID-19 Management Tool and for Future Public Health Emergencies

Presented by Novo Nordisk, Inc. | Dec. 16 | 1 p.m. ET



CSG 2020 OCT. 26-DEC. 18
National Conference
REIMAGINED

We are experiencing technical difficulties.
Please exit the meeting and check your
email for more information.